



# GX400i Pro series

## Light Industrial Printer



### Lightweight. High-Performance. Built for Industrial Efficiency.

This compact industrial barcode printer is engineered for efficiency and ease of use. Equipped with a 3.2-inch full-color touchscreen, it offers intuitive operation and clear visual feedback. Supporting 8-inch OD label rolls with both 1-inch and 3-inch cores, and a 450-meter ribbon (ink side out), it ensures longer runs with fewer media changes.

Weighing only 8.5 kg, the printer combines a durable build with a lightweight design—ideal for flexible installation and mobility. Enhanced sensors with auto-calibration provide accurate label detection, while 0 mm edge-to-edge printing maximizes media usage. With print speeds up to 12 ips (203 dpi), 10 ips (300 dpi), and 4 ips (600 dpi), it delivers both speed and exceptional print quality.

A modular print engine allows for scalable performance and seamless system integration, adapting easily to diverse industrial needs. The printer also features a user-friendly maintenance design—quick-release printhead and platen roller make cleaning and part replacement fast and simple.

Whether in manufacturing, logistics, or retail, this printer delivers fast, reliable, and precise barcode printing to boost productivity across your entire workflow.



#### PDF Printing

Directly print PDF files without needing a driver, making them compatible with various operating platforms such as Windows/Linux/Android/iOS/MAC.



#### IEEE 802.1X Protocol

Supports 802.1X network authentication, providing a more secure network authentication process for users who are using LAN transmission.



#### Wireless Connectivity

Can be paired with a USB WiFi or Bluetooth dongle to enable wireless connectivity (for supported Dongle info, refer to user manual).





- **Bi-Fold Cover**

Easy media loading and replacement, even in tight spaces.

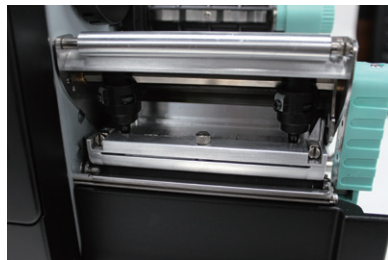
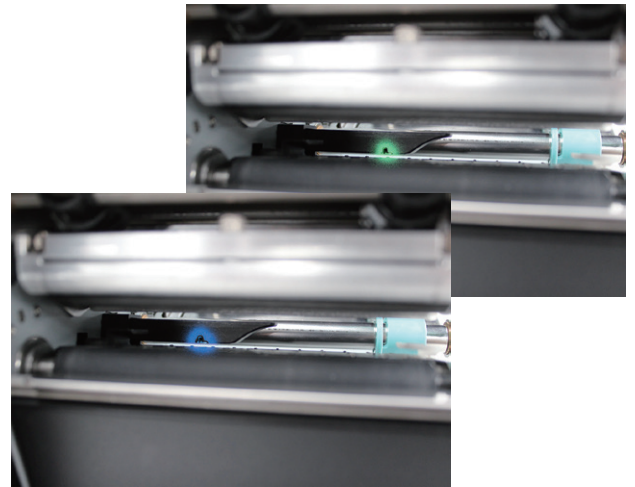
- **Large Transparent Media Window**

Instantly check supply levels at a glance.



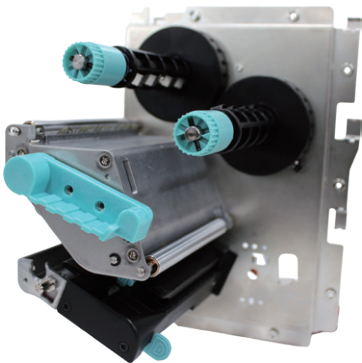
- **Sensor Alignment Indicator Light**

Built-in indicator light ensure quick and accurate sensor positioning for hassle-free media set up.



- **Simplified Maintenance**

Quick access and minimal steps for upkeep.

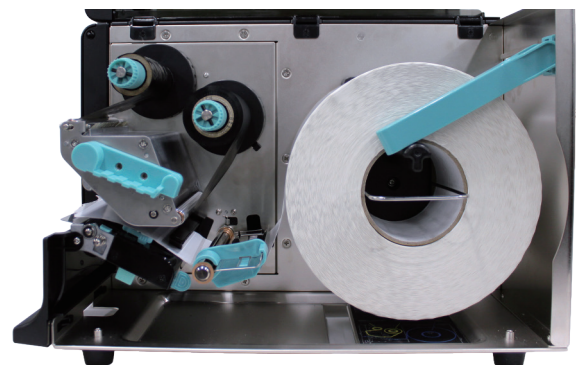


- **Modular Print Engine**

Enables scalable performance , streamlined support and flexible integration.

- **Hi- capacity media and ribbon support**

Enables scalable performance , streamlined support and flexible integration.



# Specification

2026/03/30

Model Name		GX420i Pro	GX430i Pro	GX460i Pro
<b>Print Method</b>		Thermal Transfer / Direct Thermal		
<b>Resolution</b>		203 dpi (8 dots/mm)	300 dpi (12 dot/mm)	600 dpi (24 dots/mm)
<b>Print Speed</b>		Up to 12 ips (304.8 mm/s)	Up to 10 ips (254 mm/s)	Up to 4 ips (102 mm/s)
<b>Print Width</b>		4.21" (107 mm)	4.13" (105 mm)	4.13" (105 mm)
<b>Print Length</b>		Min. 0.12" (3 mm)**; Max. 400" (10,160 mm)	Min. 0.12" (3 mm)**; Max. 350" (8,900 mm)	Min. 0.12" (3 mm)** ; Max. 100" (2,540 mm)
<b>Processor</b>		32-bit RISC CPU		
<b>Memory</b>	<b>Flash</b>	16 GB Storage		
	<b>SDRAM</b>	512 MB		
<b>Sensor Type</b>		Adjustable reflective sensor(Top and down)and transmissive sensor, left aligned		
<b>Media</b>	<b>Type</b>	Continuous form, gap labels, black mark sensing, and punched hole; label length set by auto sensing or programming Min. 0.39"(10 mm)-Max 4.65"(118mm) Tear : Min. 0.78" (20mm) – Max. 4.65" (118 mm)		
	<b>Width</b>	Cutter : Max. 4.61" (117 mm) Dispenser : Max. 4.33" (110 mm)		
	<b>Thickness</b>	Min. 0.0024" (0.06 mm) – Max. 0.01" (0.25 mm)		
	<b>Label roll diameter</b>	Max. 8" (203.2 mm) with 3" (76.2 mm) core Max. 6" (152.4 mm) with 1.5" (38.1 mm) core Max. 5" (127 mm) with 1" (25.4 mm) core		
	<b>Core diameter</b>	Min. 1" (25.4 mm) – Max. 3" (76.2 mm)		
<b>Ribbon</b>	<b>Types</b>	Wax, wax/resin, resin		
	<b>Length</b>	Max. 1476' (450 m)		
	<b>Width</b>	Min. 1.18" (30 mm) – Max. 4.33" (110 mm)		
	<b>Ribbon roll diameter</b>	3" (76.2 mm)		
	<b>Core diameter</b>	1" (25.4 mm)		
<b>Printer Language</b>		EZPL, GEPL, GZPL, GDPL auto switch		
<b>PDF Documents</b>		Supports to print PDF documents		
<b>Software</b>	<b>Label design tool</b>	GoLabel II (for EZPL only) (Windows)		
	<b>Management tools</b>	GoTools (Windows / Android / iOS) GoUtility (Windows)		
	<b>APP</b>	GoAPP(Android / iOS)		
<b>Driver</b>		Windows 10, Window11, Windows Server 2008 R2, 2012, 2012 R2, 2016, 2019, 2022, MAC, Linux		
<b>SDK</b>		Windows 10, Windows 11, Android, Mac, iOS		
<b>Resident Fonts</b>	<b>Bitmap Fonts</b>	6, 8, 10, 12, 14, 18, 24, 30, 16X26 and OCR A & B 0°, 90°, 180°, 270° rotatable, single characters 0°, 90°, 180°, 270° rotatable 8 times expandable in horizontal and vertical directions		
	<b>TTF Fonts</b>	(Bold / Italic / Underline) 0°, 90°, 180°, 270° rotatable Internal TTF Fonts x 5: Traditional Chinese, Simplified Chinese, Japanese, Korean, Western languages		
<b>Download Fonts</b>	<b>Bitmap Fonts</b>	0°, 90°, 180°, 270° rotatable, single characters 0°, 90°, 180°, 270° rotatable		
	<b>Asian Fonts</b>	16x16, 24x24. Traditional Chinese (BIG-5), Simplified Chinese(GB2312), Japanese (S-JIS), Korean (KS-X1001) 0°, 90°, 180°, 270° rotatable and 8 times expandable in horizontal and vertical directions		
	<b>TTF Fonts</b>	(Bold / Italic / Underline) 0°, 90°, 180°, 270° rotatable		

<b>Barcodes</b>	<p><b>1-D Bar Codes</b> China Postal Code, Codabar, Code 11, Code 32, Code 39, Code 93, Code 128 (subset A, B, C), EAN-8/EAN-13 (with 2 &amp; 5 digits extension), EAN 128, FIM, German Post Code, GS1 DataBar, HIBC, Industrial 2 of 5, Interleaved 2-of-5 (1 2 of 5), Interleaved 2-of-5 with Shipping Bearer Bars, ISBT-128, ITF 14, Japanese Postnet, Logmars, MSI, Postnet, Plessey, Planet 11 &amp; 13 digit, RPS 128, Standard 2 of 5, Telepen, Matrix 2 of 5, UPC-A/UPC-E (with 2 or 5 digit extension), UCC/EAN-128 K-Mart, Random Weight and Pharmacode</p> <p><b>2-D Bar Codes</b> Aztec code, Code 49, Codablock F, Datamatrix code, MaxiCode, Micro PDF417, Micro QR code, PDF417, QR code, TLC 39, GS1 Composite, DotCode, Marco PDF 417</p>
<b>Code Pages</b>	Codepage 437, 737, 850, 851, 852, 855, 857, 860, 861, 862, 863, 865, 866, 869 Windows 1250, 1251, 1252, 1253, 1254, 1255, 1257 Unicode UTF8, UTF16BE, UTF16LE
<b>Graphics</b>	Resident graphic file types are BMP and PCX, other graphic formats are downloadable from the software
<b>Interfaces</b>	USB 2.0 (Type B) Serial port (RS-232) Ethernet 10/100 Mbps (IEEE 802.1X) USB Host (Type A) *3 (2 pcs in the front, 1 pc in the rear)
<b>Wireless Connection</b>	Supports commercially available Linux USB dongle *** Wifi 6, Bluetooth Classic/BLE supported based on USB dongle. ***
<b>Control Panel</b>	1 Power on/standby button with green color LED backlight 1 Control key: FEED / PAUSE / CANCEL with dual color LED backlight: Ready (Green); Error (Red) 1 Calibration button at rear panel 3.2" LCD Touched Panel
<b>Real Time Clock</b>	Standard
<b>Power</b>	Internal auto switching power supply Input: AC 100-240V, 50-60Hz
<b>Environment</b>	<p><b>Operation temperature</b> 41° F to 104° F (5° C to 40° C)</p> <p><b>Storage temperature</b> -4° F to 140° F (-20° C to 60° C)</p>
<b>Humidity</b>	<p><b>Operation</b> 20-85%, non-condensing</p> <p><b>Storage</b> 10-90%, non-condensing</p>
<b>Agency Approvals</b>	CB, CE (EMC), FCC Class B, ICES-003, cULus, UKCA, BSMI, CCC, Energy Star ****
<b>Dimension</b>	<p><b>Length</b> 403 mm (15.9" )</p> <p><b>Width</b> 260 mm (10.2" )</p> <p><b>Height</b> 274 mm (10.8" )</p> <p><b>Weight</b> 8.5 Kg (18.7 lbs), excluding consumables</p>
<b>Options</b>	Cutter module (User Install) Label Dispenser (User Install) External label unwind stand External label rewinder Applicator Interface (Dealer Install) Internal Rewinder (Dealer Install) Red light sensor (Dealer Install) RFID module (Dealer Install)

\* Specifications are subject to change without notice. All company and/or product names are trademarks and/or registered trademarks of their respective owners.

\*\* Minimum print height and maximum print speed specification compliance can be dependent on non-standard material variables such as label type, thickness, spacing, liner construction, etc. Godex is pleased to test non-standard materials for minimum print height, and maximum print speed capability.

\*\*\* Verified USB dongle brands and models, please refer to User Manual for detailed information.

\*\*\*\* The safety certification marks may be different depending on sales regions.

# Applications

## Applications for Labels & Barcodes

The GX400i Pro series is extremely versatile and works well for most applications.



### Special Materials

Small components labeling, name Plates, Plastic tubes, Plastic cards, Cable labeling.

### Warehouses, Logistic & Transportation

Stack label, Product label, Postal slip Storage management, Dispatch label, Packaging label, Delivery receipt, etc.

### Manufacturing

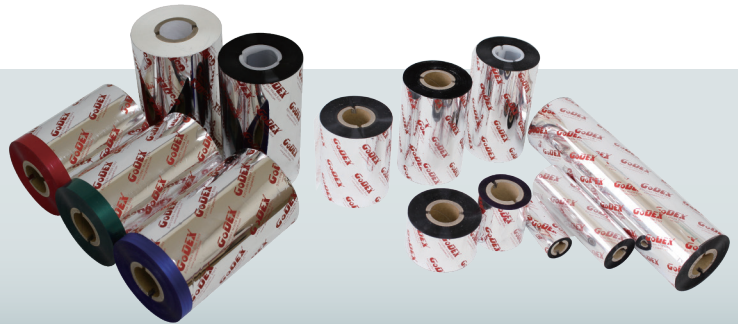
Product label, Content label, Packaging label, Administrative slip, In & Out record slip, etc.

## GoDEX RIBBONS

High quality original GODEX thermal transfer ribbons

GODEX offers premium thermal transfer ribbons that will fit most of your printing applications.

- Wax
- Wax/ Resin
- Resin
- Near Edge



## GoDEX LABEL DESIGN SOFTWARE

Golabel & Golabel II Software / User Friendly

GoLabel & GoLabel II are based on a WYSIWYG (what you see is what you get) user interface, making it so easy for you to create and print barcode labels. GoLabel & GoLabel II are the first-choice in FREE label design software that you don't want to miss!

Go visit [www.godexintl.com](http://www.godexintl.com) and download Golabel & Golabel II to experience it!

